



Fitting Guide for 1/2 round D-Line

Measuring up

Plan your cable path. Check that you have all parts required. Next consider the space that will be needed for any accessories needed.

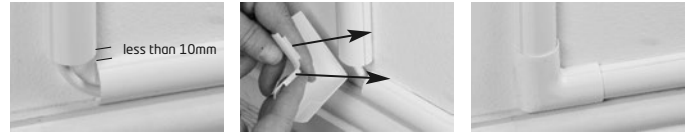
Clip-Over accessories allow a tolerance for imprecise measurements and untidy cuts.

Smooth Fit accessories give a smooth flush-alignment for perfect finish, but require precise measurements and straight cuts.

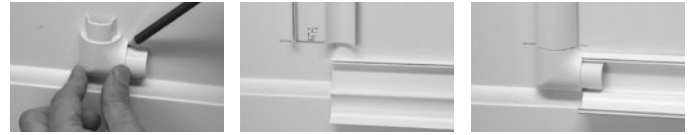
For Smooth fit use the accessory part as a template; pencil mark the surface at the shoulder points of the accessory.

These pencil marks indicate the point that the D-Line length needs to measure up to.

Clip-Over example...



Smooth fit example...



Cutting & Installing Lengths



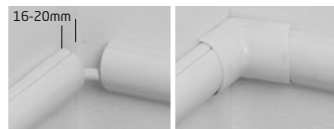
- Measure length(s). Pencil mark where cut is required.
- Use a mitre block and junior hacksaw to cut at the outer edge of the pencil mark.
- Remove the protective film cover.
- To peel & stick... Make sure the surface is clean & dry. Alternatively lengths can be drilled and screw fixed; as recommended for profiles with bases wider than 35mm.
- For easier installation we recommend that horizontal runs are fixed with the click lock at the top and the hinge at the base.
- Take care when positioning lengths, as a strong bond will be created with the surface.

Installing cables & accessories

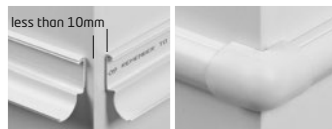
Clip-Over

Lay cables into lengths, close the lid ensuring it snaps shut, then clip the accessory in place. The tabs clip over the top of the lengths.

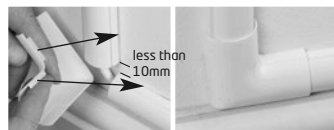
Internal Bend



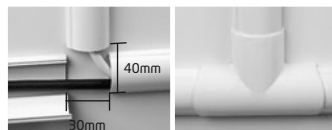
External Bend



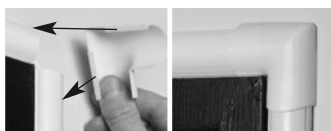
Flat Bend



Equal Tee



Door Top Bend

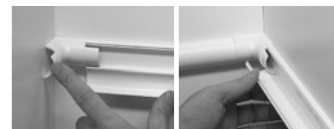


Smooth Fit

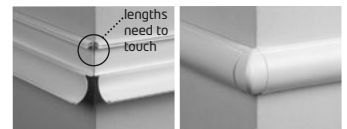
Lay cables into lengths, place the required accessory over the cables, then close the lid ensuring it snaps shut.

The lengths hold the accessories in position.

Internal Bend



External Bend



Flat Bend



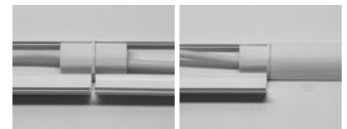
Equal Tee



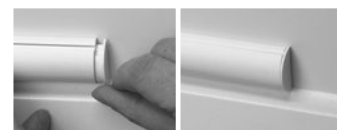
Cable Inlet/Outlet



Connector



End Cap

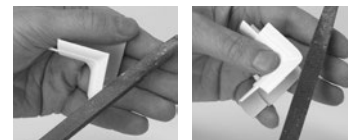


NOTE: some Clip-Over accessories have a section of self adhesive tape applied to the reverse. This helps secure the piece in place, please use if necessary.

After Care



D-Line can accept gloss or emulsion paints... For best results use fine sandpaper to key the surface prior to painting.



It may be necessary to shape some accessories to allow for imperfections on walls.

Important: If using D-Line for 240v mains cables it is recommended you leave 45%+ of internal capacity for air circulation.